



## M/T KIRSTEN

83,600 DWT PRODUCT TANKER  
LR SHIPPING THREE LTD.  
BUILT AT 3 MAY, CROATIA IN 1988

### Dimension

Length over all	228,26 m
Breadth	32,2 m
Depth	21,66 m
Draft	16,0/12,5 m

### Tonnage

DWT Summer	83 600/60 000 t
Gross	46 084 t
Net	26 620 t

### Capacity

Cargo 98%	89 180 cu.m incl. slops
Ballast	30 000 cu.m
HFO	1997 cu.m
Do	262 cu.m
FW	300 cu.m (+1000 cu.m tank cleaning)

### Heating

Cargo tank	Heat exchangers
Slop tanks	Coils

### Pumps

Cargo pumps	12x950 cu/h
Slop pumps	250 cu/h
Ballast pumps	2x1050 cu/h
Discharge cap	5 700 cu/h

### Machinery

Main engine	8 330 kW
Aux eng	3x875+1320 kW
Trial speed	14,42 knots

### Class:

Det Norske Veritas

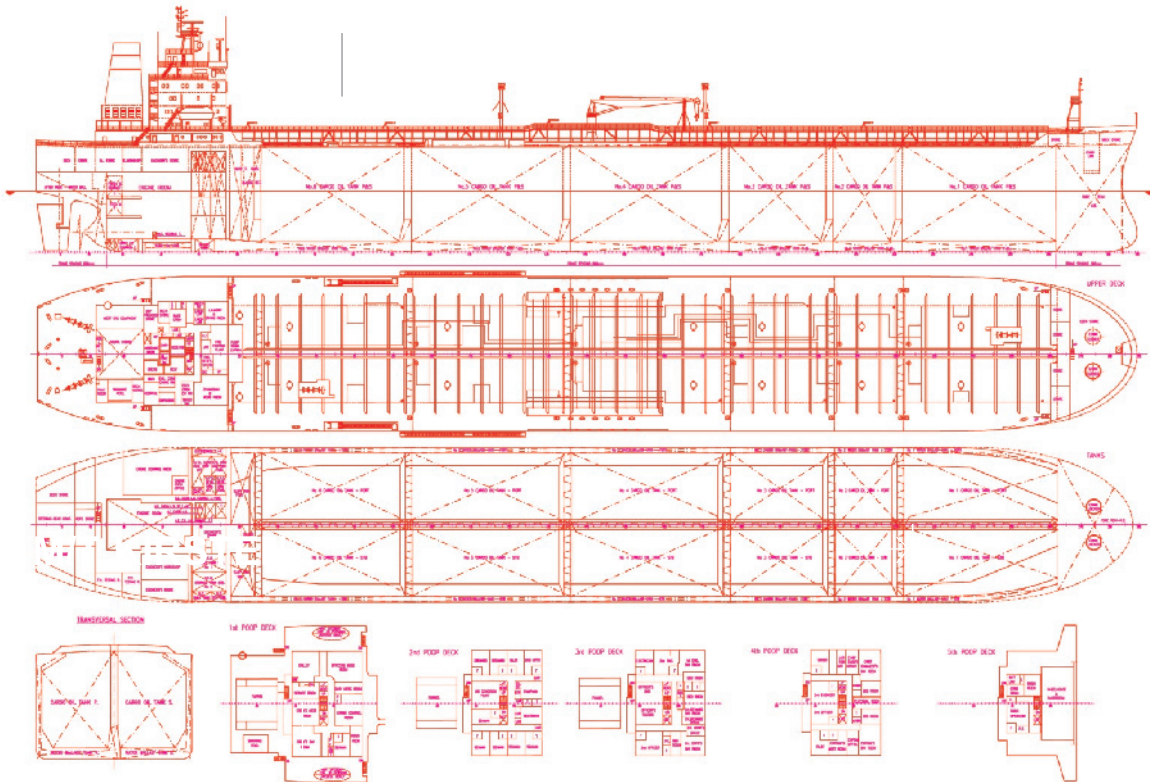
MORE INFO 

### Manager

**MARINVEST**

Telephone: 46 31 81 26 90  
Fax: 46 31 81 26 22  
E-mail: office@marinvest.se





Tank Capacities	98% Capacity	Draft metres	Deadw. SW Tonnes
1 port	7949.9 m3	6	18 600
1 stbd	7934.8 m3	7	24 800
2 port	3784.4 m3	8	31 000
2 stbd	3777.3 m3	9	37 200
3 port	5737.1 m3	10	43 600
3 stbd	5726.0 m3	11	50 000
4 port	8774.6 m3	12	56 500
4 stbd	8757.3 m3	12,5	60 000
5 port	8774.6 m3	13	63 200
5 stbd	8757.3 m3	14,026	69 999
6 port	8323.1 m3	15	76 700
6 stbd	8306.7 m3	16,019	83 651
slop port	1428.3 m3		
slop stbd	792.1 m3		

**7 Segregations**  
**All cargo tanks zink coated**

**Heating Coils** Sundrod deck mounted cargo heaters for all COT,  
 In slop tanks there are heating coils (stainless steel)

**Ballast Tanks** Capacity: 31886.1 m3, all epoxy coated

**Main Engine** Sulzer 6RTA 62, 11,330 bhp/8330 kw

**Aux. Engines** Man B&W 5S28LH-48, 3 X 875 kw

**Speed/Consumption** Ballast 14.0 knots @ 31 tonnes/day  
 Laden 13.5 knots @ 32 tonnes/day

