



M/T NORTHERN BELL

83,600 DWT PRODUCT TANKER
 LR SHIPPING FIVE LTD.
 BUILT AT 3 MAY, CROATIA IN 1990

Dimension

Length over all 228,26 m
 Breadth 32,2 m
 Depth 21,66 m
 Draft 16,0/12,5 m

Tonnage

DWT Summer 83 600/60 000 t
 Gross 46 084 t
 Net 26 620 t

Capacity

Cargo 98% 89 180 cu.m incl. slops
 Ballast 30 000 cu.m
 HFO 1997 cu.m
 Do 262 cu.m
 FW 300 cu.m
 (+1 000 cu.m tank cleaning)

Heating

Cargo tank Heat exchangers
 Slop tanks Coils

Pumps

Cargo pumps 12x950 cu/h
 Slop pumps 250 cu/h
 Ballast pumps 2x1 050 cu/h
 Discharge cap 5 700 cu/h

Machinery

Main engine 8 330 kW
 Aux eng 3x875+1320 kW
 Trial speed 14,42 knots

Class:

Det Norske Veritas

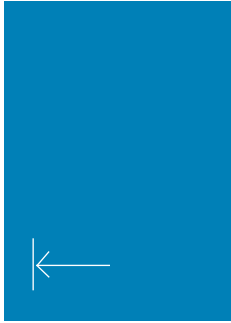
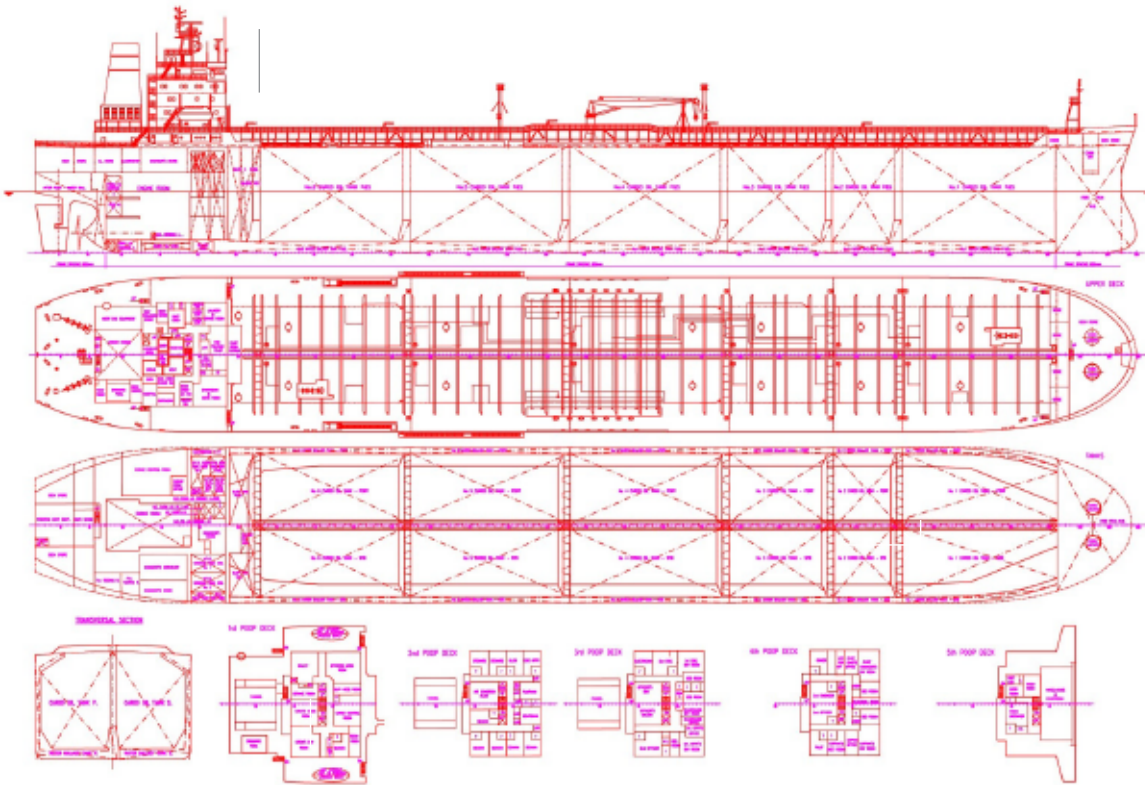
MORE INFO [→](#)

Manager

MARINVEST

Telephone: 46 31 81 26 90
 Fax: 46 31 81 26 22
 E-mail: office@marinvest.se





Tank Capacities	98% Capacity	Draft metres	Deadw. SW Tonnes
1 port	7949.9 m3	6	18 600
1 stbd	7934.8 m3	7	24 800
2 port	3784.4 m3	8	31 000
2 stbd	3777.3 m3	9	37 200
3 port	5737.1 m3	10	43 600
3 stbd	5726.0 m3	11	50 000
4 port	8774.6 m3	12	56 500
4 stbd	8757.3 m3	12,5	60 000
5 port	8774.6 m3	13	63 200
5 stbd	8757.3 m3	14,026	69 999
6 port	8323.1 m3	15	76 700
6 stbd	8306.7 m3	16,019	83 651
slop port	1428.3 m3		
slop stbd	792.1 m3		

7 segregations
All cargo tanks epoxy coated

- Heating Coils** Sundrod deck mounted cargo heaters for all COT, In slop tanks there are heating coils (stainless steel)
- Ballast Tanks** Capacity: 31886.1 m3, all epoxy coated
- Main Engine** Sulzer 6RTA 62, 11,330 bhp / 8330 kw
- Aux. Engines** Man B&W 5S28LH-48, 3 X 875 kw
- Speed/Consumption** Ballast 14.0 knots @ 31 tonnes/day
 Laden 13.5 knots @ 32 tonnes/day

