

## LOADING SCALE

DRAUGHT		MOM TO CHANGE TRIM	TONNES PER CM IMMERSION		DISPLACEMENT (TONNES)		DEADWEIGHT (TONNES)		DRAUGHT	
FEET	m		1,000	1,025	1,000	1,025	1,000	1,025	FEET	m
51	15.24			70					51	15.24
50	15.24			70					50	15.24
49	15.24			70					49	15.24
48	15.24			70					48	15.24
47	15.24	119000	68						47	15.24
46	15.24			70					46	15.24
45	15.24			70					45	15.24
44	15.24			70					44	15.24
43	15.24			70					43	15.24
42	15.24			70					42	15.24
41	15.24			70					41	15.24
40	15.24			70					40	15.24
39	15.24	114000	67						39	15.24
38	15.24			70					38	15.24
37	15.24			70					37	15.24
36	15.24			70					36	15.24
35	15.24	109000	66						35	15.24
34	15.24			70					34	15.24
33	15.24			70					33	15.24
32	15.24			70					32	15.24
31	15.24	104000	65						31	15.24
30	15.24			70					30	15.24
29	15.24			70					29	15.24
28	15.24	99000	64						28	15.24
27	15.24			70					27	15.24
26	15.24			70					26	15.24
25	15.24			70					25	15.24
24	15.24	94000	63						24	15.24
23	15.24			70					23	15.24
22	15.24			70					22	15.24
21	15.24			70					21	15.24
20	15.24	89000	63						20	15.24
19	15.24			70					19	15.24
18	15.24			70					18	15.24
17	15.24			70					17	15.24
16	15.24			70					16	15.24
15	15.24	84000	62						15	15.24
14	15.24			70					14	15.24
13	15.24			70					13	15.24
12	15.24			70					12	15.24
11	15.24	79000	59						11	15.24
10	15.24			70					10	15.24
9	15.24			70					9	15.24
8	15.24			70					8	15.24
7	15.24	74000	57						7	15.24



## MARINVEST CLASS 74999 DWT OIL TANKERS ICE CLASS-1A

CLASS: DNV +1A1, TANKER FOR OIL, ESP, ICE 1A, E0, NAUT-OC, LCS-DC, VCS-2, COAT-2, ETC, TMON, NAUTICUS (NEWBUILDING)

### M/T MARILEE

Delivered September 2006

### M/T MARIBEL

Delivered April 2007

### M/T MARI UGLAND

Delivered February 2008

### M/T MARIANN

Delivered April 2008

### MAIN PARTICULARS

Length Overall	228.50 m
Length BP	220.00 m
Breadth Moulded	32.24 m
Depth Moulded	20.45 m
Design draft (moulded)	12.20 m
Summer draft	14.18 m
Deadweight at design draft	61280 mt
Deadweight at Summer draft	74999 mt
Main engine MCR	13560 kW
Trial speed at 85% MCR	16.4 knots
Tonnage International Gross/Net	42835/22045

### CAPACITY

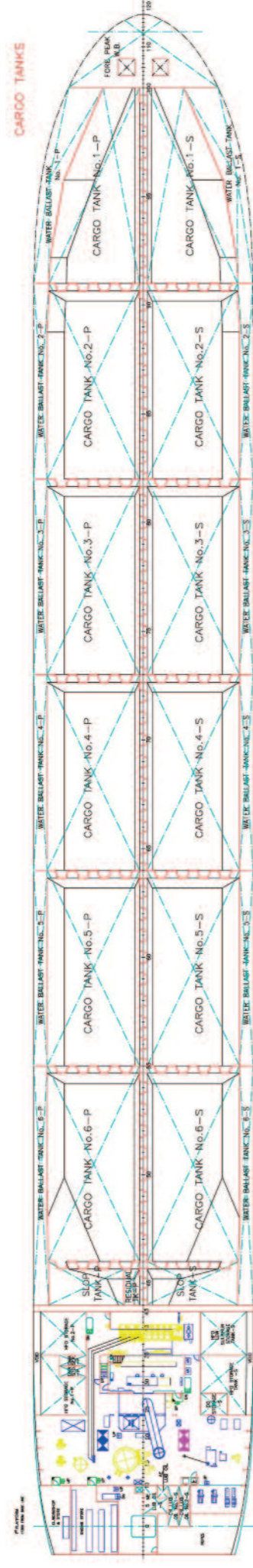
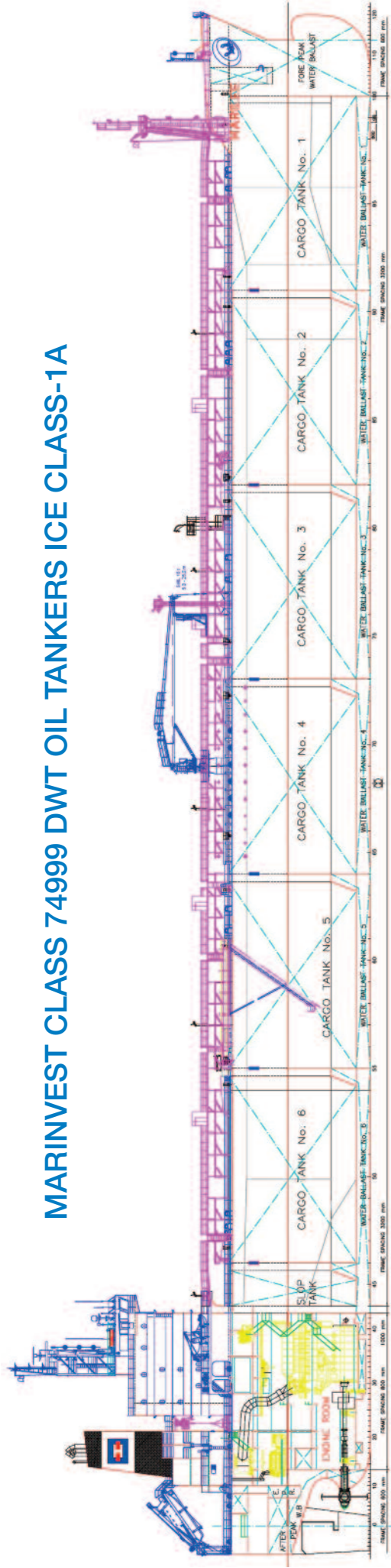
Cargo 98%	83960 m³
Ballast 100%	31818 m³
Heavy Fuel	2228 mt
Diesel	164 mt
Fresh Water	245 m³
(plus 425 m³ for tank washing)	

ACCOMMODATION FOR 30 PERSONS PLUS 6 SUEZ CREW



Marinvest AB, Viktor Rydbergsgatan 10, 411 32 Göteborg, SWEDEN  
Phone: +46 31 81 72 50, E-mail: office@marinvest.se

## MARINVEST CLASS 74999 DWT OIL TANKERS ICE CLASS-1A



### ■ M/T MARILEE

Delivered September 2006

### ■ M/T MARIBEL

Delivered April 2007

### ■ M/T MARI UGLAND

Delivered February 2008

### ■ M/T MARIANN

Delivered April 2008

## Machinery and deck equipment

### PROPELLING MACHINERY

One **Marine Diesel Engine** "Brodosplit MAN 6S60MC-C, Two Stroke, Crosshead type, Non-reversible, Six cylinders, 600 mm Bore, 2400 mm Stroke, developing 13560 kW at 105 RPM.

**PTI unit:** Used as "take me home device" ca 2500 kW, hydraulically driven using common hydraulic system for cargo and ballast system.

### PROPELLER

One Controllable Pitch Anti-Clockwise (right-handed) Propeller, 4 blade, diameter 6800 mm.

### STEERING GEAR

One electro hydraulic steering gear, rotary vane type.

### AUXILIARY MACHINERY

Three Generators, driven by MAN 6L23/30H diesel engines, each 1137 kVA (910 kW) at 900 RPM. One Emergency Generator driven by Diesel Engine 310 kVA (248 kW)

### BOILERS

- One oil fired vertical Marine Boiler of 25000 kg/hr, 7 bar Saturated steam.
- One Composite Oil Fired / Exhaust Marine Boiler of 3600 / 1600 kg/hr, 7 Bar Saturated steam

### FIRE FIGHTING EQUIPMENT

- Fire detection system
- Foam and Water system for Deck Fire Fighting
- High Expansion Foam Fire Fighting system and Water based fixed Local application in Engine Room
- Inert Gas Generator for Cargo Tanks
- CO2 system in Galley and Paint Store Aft
- Seawater Sprinkler system for Forward Paint Store

### LIFE SAVING EQUIPMENT

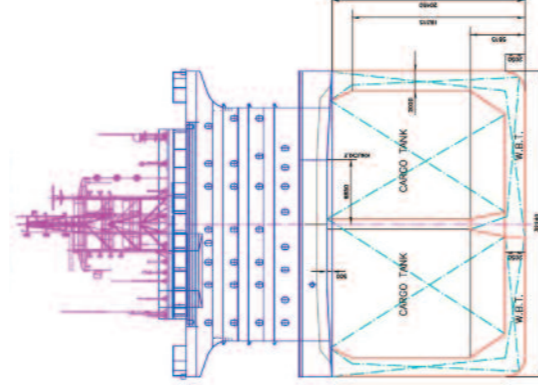
- One Free-fall, Fire protected Life Boat for 36 persons
- One Rescue Boat with Davits
- One Inflatable life raft for 20 persons on each side of accommodation
- One Inflatable life raft for 16 persons on each side of accommodation
- One Inflatable life raft for 6 persons forward

### ANCHORS AND CABLES

- Two Stockless Bow Anchors, weight 11000 kg each
- Chain Cable 81 mm, total length 687.5 m

### MOORING/DECK EQUIPMENT

- Two high pressure, combined hydraulic Windlass / Mooring Winches (Double drum, 160 kN) on Forecastle
- Three high pressure, hydraulic Mooring Winches (Double split drum, 160 kN at Main deck and three at Poop deck)
- One Cargo hose handling Crane electro/hydraulic driven, 150 kN SWL/25 m
- One provision Crane, 40 kN SWL 2.5 m outreach from shipside



## Coating

- 2\*150 mic. Sigma Prime 800 (Epoxy) in Ballast Tanks
- 3\*100 mic. Sigma Guard 745 (Phenolic Epoxy) in Cargo and Slop Tanks
- 2\*100 mic. Ecofleet 290 TBT free Selfpolishing Antifouling

## Cargo Handling

### CARGO PUMPS

- FRAMO Submerged Hydraulically driven pumps, material S/S:
- 12 cargo pumps 1000 m³/hr at 130 mLC
- 2 slop pumps 300 m³/hr at 130 mLC
- 1 residual pump 80 m³/hr at 130 mLC
- 1 portable pump 200 m³/hr at 60 mLC

### CARGO PIPING

Cargo valves remotely operated, valves and piping material AISI 316

### CARGO HEATING

- S/S Heating Coils in Slop tanks and Deck Cargo heaters for Cargo Tanks, 7 bar steam
- Cargo in Slop and Cargo tanks can be heated from 44° C to 66° C in four days.

## Cargo Handling

- Two FRAMO submerged ballast pumps, each 1500 m³/hr at 2 Bar.
- Two General Service pumps 260 m³/hr
- Ballast Valves Hydraulically remote controlled
- Ballast Pipeline GRE pipe inside Ballast Tanks

TANK	COMPARTMENT	FRAMES	100% VOLUME m³	98% VOLUME m³	A-P	BASE-L	C.LINE	MOMENT OF INERTIA m³
1	CARGO TANK No.1-P	91-100	5591.5	5479.7	195,057	11,888	-5,686	4071
2	CARGO TANK No.1-S	91-100	5594.8	5482.7	195,091	11,889	5,683	4079
3	CARGO TANK No.2-P	82-91	7223.4	7078.9	167,983	11,574	-6,983	6827
4	CARGO TANK No.2-S	82-91	7226.5	7082.0	168,008	11,575	8,982	6837
5	CARGO TANK No.3-P	73-82	7239.8	7095.0	139,211	11,576	-7,001	6676
6	CARGO TANK No.3-S	73-82	7242.9	7098.0	139,236	11,576	6,998	6886
7	CARGO TANK No.4-P	64-73	7239.8	7095.0	110,411	11,576	-7,001	6676
8	CARGO TANK No.4-S	64-73	7242.9	7098.0	110,436	11,576	6,998	6686
9	CARGO TANK No.5-P	55-64	7239.8	7095.0	81,611	11,576	-7,001	6676
10	CARGO TANK No.5-S	55-64	7242.9	7098.0	81,636	11,576	6,998	6686
11	CARGO TANK No.6-P	46-55	7144.0	7001.1	52,951	11,672	-6,936	6636
12	CARGO TANK No.6-S	46-55	7147.1	7004.2	52,977	11,673	6,933	6646
<b>TOTAL</b>			<b>83375.2</b>	<b>81707.7</b>				
13	SLOP TANK -P	44-46	1009.9	989.7	35,333	12,700	-7,497	681
14	SLOP TANK -S	44-46	1286.9	1261.2	35,541	12,564	6,550	1324
15	RESIDUAL TANK -P	44-46	278.1	272.5	35,420	12,076	-1,427	10
<b>GRAND TOTAL</b>			<b>88950.1</b>	<b>84231.1</b>				

## Communication Equipment

- MF/HF Transceiver, DSC scanning Watch receiver, SATCOM C el. unit with VDU, keyboard and printer
- Fleet 77
- SEVSAT C-band broadband system, 128/128 kb/s
- Two SAT EPIRB
- Three portable VHF Radiotelephones
- Two radar transponders
- Two VHF radio Telephones

## Navigation Equipment

Automatic steering, route planning, route monitoring, nautical information display with following equipment:

- 2 Radars with one extra display, 2 gyro Compasses, Autopilot, 2 DGPS navigators, Doppler log, Echo sounder, Anemometer, rudder angle indicator.
- Full, dual ECDIS, Conning display at Navigation stand and Bridge Wings.
- Wind speed indicator
- Central clock system
- Weather facsimile
- NAVTEX receiver