

LOADING SCALE

DRAUGHT		MOD TO CHANGE TRIM	TONNES PER CM IMMERSION		DISPLACEMENT (TONNES)		DEADWEIGHT (TONNES)		DRAUGHT	
FEET	m		1,000	1,025	1,000	1,025	1,000	1,025	FEET	m
51	15.24			70					51	15
50	15.24			70					50	15
49	15.00			70					49	15
48	14.63			70					48	15
47	14.26	119000	68						47	15
46	14.00			70					46	14
45	13.74			70					45	14
44	13.48			70					44	14
43	13.22			70					43	13
42	12.96			70					42	13
41	12.70			69					41	13
40	12.44			69					40	12
39	12.18	114000	67						39	12
38	11.92			67					38	12
37	11.66			67					37	11
36	11.40			67					36	11
35	11.14	109000	66						35	11
34	10.88			66					34	11
33	10.62			67					33	10
32	10.36			67					32	10
31	10.10	104000	65						31	10
30	9.84			65					30	9
29	9.58			65					29	9
28	9.32	99000	64						28	8
27	9.06			64					27	8
26	8.80			65					26	8
25	8.54			63					25	8
24	8.28	94000		64					24	7
23	8.02			64					23	7
22	7.76			62					22	7
21	7.50			62					21	6
20	7.24	89000		63					20	6
19	6.98			63					19	6
18	6.72			61					18	5
17	6.46			62					17	5
16	6.20	84000		60					16	5
15	5.94			60					15	4
14	5.68			61					14	4
13	5.42			61					13	4
12	5.16			59					12	3
11	4.90	79000		60					11	3
10	4.64			60					10	3
9	4.38			58					9	2
8	4.12	74000		59					8	2
7	3.86			57					7	2



MARINVEST CLASS 74999 DWT OIL TANKERS ICE CLASS-1A

CLASS: DNV +1A1, TANKER FOR OIL, ESP, ICE 1A, E0, NAUT-OC, LCS-DC, VCS-2, COAT-2, ETC, TMON, NAUTICUS (NEWBUILDING)

M/T MARIKA

Delivered June 2008

M/T MARINOR

To be delivered

MAIN PARTICULARS

Length Overall	228.50 m
Length BP	220.00 m
Breadth Moulded	32.24 m
Depth Moulded	20.45 m
Design draft (moulded)	12.20 m
Summer draft	14.18 m
Deadweight at design draft	61280 mt
Deadweight at Summer draft	74999 mt
Main engine MCR	13560 kW
Trial speed at 85% MCR	16.4 knots
Tonnage International Gross/Net	42835/22045

CAPACITY

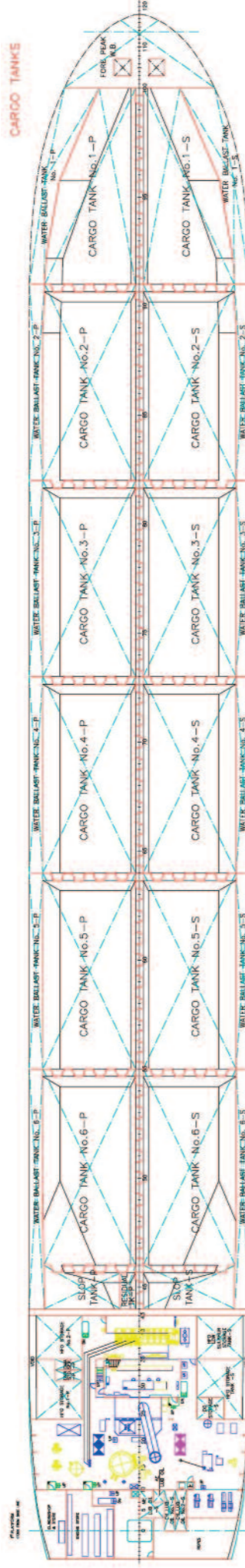
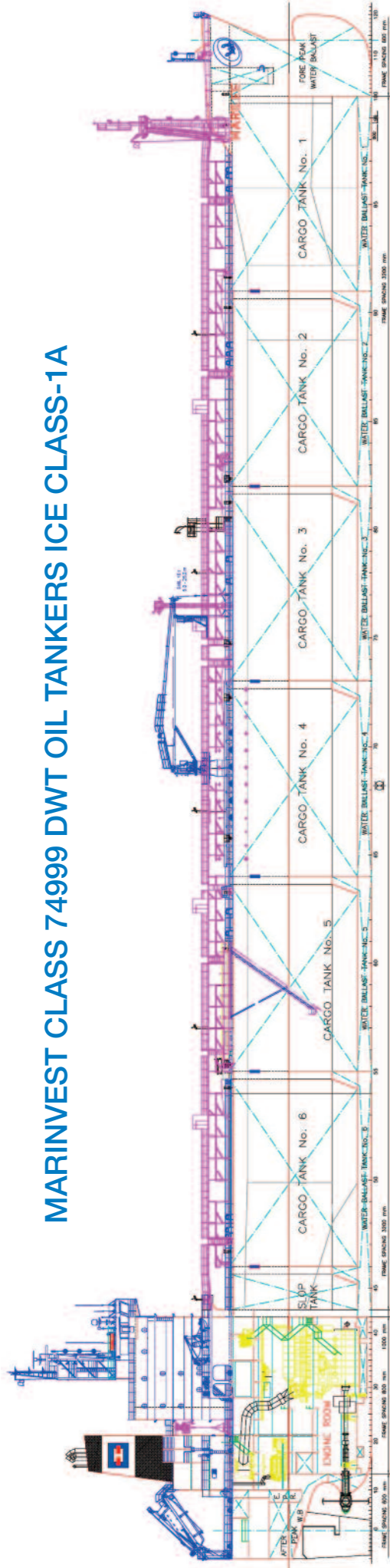
Cargo 98%	83960 m³
Ballast 100%	31818 m³
Heavy Fuel	2228 mt
Diesel	164 mt
Fresh Water	245 m³
(plus 425 m³ for tank washing)	

ACCOMMODATION FOR 30 PERSONS PLUS 6 SUEZ CREW



Marinvest AB, Viktor Rydbergsgatan 10, 411 32 Göteborg, SWEDEN
Phone: +46 31 81 72 50, E-mail: office@marinvest.se

MARINVEST CLASS 74999 DWT OIL TANKERS ICE CLASS-1A



- **M/T MARIKA**
Delivered June 2008
- **M/T MARINOR**
To be delivered

Machinery and deck equipment

PROPELLING MACHINERY

One **Marine Diesel Engine** "Brodosplit MAN 6S60MC-C, Two Stroke, Crosshead type, Non-reversible, Six cylinders, 600 mm Bore, 2400 mm Stroke, developing 13560 kW at 105 RPM.

PROPELLER

One Controllable Pitch Anti-Clockwise (right-handed) Propeller, 4 blade, diameter 6800 mm.

STEERING GEAR

One electro hydraulic steering gear, rotary vane type.

AUXILIARY MACHINERY

Four Generators, driven by MAN 8L23/30H diesel engines, each 1229 kVA (983 kW) at 720 RPM. One Emergency Generator driven by Diesel Engine 310 kVA (248 kW)

BOILERS

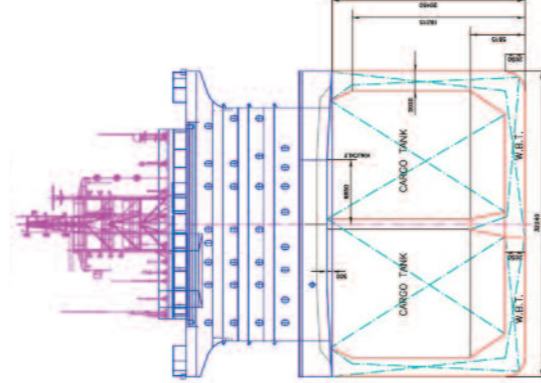
- One oil fired vertical Marine Boiler of 25000 kg/hr, 7 bar Saturated steam.
- One Composite Oil Fired / Exhaust Marine Boiler of 3600 / 1600 kg/hr, 7 Bar Saturated steam

FIRE FIGHTING EQUIPMENT

- Fire detection system
- Foam and Water system for Deck Fire Fighting
- High Expansion Foam Fire Fighting system and Water based fixed Local application in Engine Room
- Inert Gas Generator for Cargo Tanks
- CO2 system in Galley and Paint Store Aft
- Seawater Sprinkler system for Forward Paint Store

LIFE SAVING EQUIPMENT

- One Free-fall, Fire protected Life Boat for 36 persons
- One Rescue Boat with Davits
- One Inflatable life raft for 20 persons on each side of accommodation
- One Inflatable life raft for 16 persons on each side of accommodation
- One Inflatable life raft for 6 persons forward



TANK	COMPARTMENT	FRAMES	100% VOLUME m³	98% VOLUME m³	A-P m	BASE-L m	C.LINE m	MOMENT OF INERTIA m⁴
1	CARGO TANK No.1-P	91-100	5591.5	5479.7	195.057	11.888	-5.686	4071
2	CARGO TANK No.1-S	91-100	5594.8	5482.7	195.091	11.889	5.683	4079
3	CARGO TANK No.2-P	82-91	7223.4	7078.9	167.983	11.574	-6.983	6827
4	CARGO TANK No.2-S	82-91	7226.5	7082.0	168.008	11.575	8.982	6837
5	CARGO TANK No.3-P	73-82	7239.8	7095.0	139.211	11.576	-7.001	6676
6	CARGO TANK No.3-S	73-82	7242.9	7098.0	139.236	11.576	6.998	6886
7	CARGO TANK No.4-P	64-73	7239.8	7095.0	110.411	11.576	-7.001	6676
8	CARGO TANK No.4-S	64-73	7242.9	7098.0	110.436	11.576	6.998	6686
9	CARGO TANK No.5-P	55-64	7239.8	7095.0	81.611	11.576	-7.001	6676
10	CARGO TANK No.5-S	55-64	7242.9	7098.0	81.636	11.576	6.998	6686
11	CARGO TANK No.6-P	46-55	7144.0	7001.1	52.951	11.672	-6.936	6636
12	CARGO TANK No.6-S	46-55	7147.1	7004.2	52.977	11.673	6.933	6646
TOTAL			83375.2	81707.7				
GRAND TOTAL			86950.1	84231.1				

ANCHORS AND CABLES

- Two Stockless Bow Anchors, weight 11000 kg each
- Chain Cable 81 mm, total length 687.5 m

MOORING/DECK EQUIPMENT

- Two high pressure, combined hydraulic Windlass / Mooring Winches (Double drum, 160 kN) on Forecastle
- Three high pressure, hydraulic Mooring Winches (Double split drum, 160 kN at Main deck and three at Poop deck)
- One Cargo hose handling Crane electro/hydraulic driven, 150 kN SWL/25 m
- One provision Crane, 40 kN SWL 2.5 m outreach from shipside

Coating

- 300 mic. HEMPADUR Multi-Strength 4575 in Ballast, Cargo and Slop tanks
- HEMPEL Globic 8195 TBT free Self-polishing Antifouling

Cargo Handling

CARGO PUMPS

- FRAMO Submerged Hydraulically driven pumps, material S/S:
- 12 cargo pumps 1000 m³/hr at 130 mLC
- 2 slop pumps 300 m³/hr at 130 mLC
- 1 residual pump 80 m³/hr at 130 mLC
- 1 portable pump 200 m³/hr at 60 mLC

CARGO PIPING

Cargo valves remotely operated, valves and piping material AISI 316

CARGO HEATING

- S/S Heating Coils in Slop tanks and Deck Cargo heaters for Cargo Tanks, 7 bar steam
- Cargo in Slop and Cargo tanks can be heated from 44° C to 66° C in four days.

Communication Equipment

- MF/HF Transceiver, DSC scanning Watch receiver, SATCOM C el. unit with VDU, keyboard and printer
- Fleet 77
- SEVSAT C-band broadband system, 128/128 kb/s
- Two SAT EPIRB
- Three portable VHF Radiotelephones
- Two radar transponders
- Two VHF radio Telephones

Navigation Equipment

Automatic steering, route planning, route monitoring, nautical information display with following equipment:

- 2 Radars with one extra display, 2 gyro Compasses, Autopilot, 2 DGPS navigators, Doppler log, Echo sounder, Anemometer, rudder angle indicator.
- Full, dual ECDIS, Conning display at Navigation stand and Bridge Wings.
- Wind speed indicator
- Central clock system
- Weather facsimile
- NAVTEX receiver